



Overview

S-Series Acoustic Panel System®

The S-Series Acoustic Panel System® is an innovative, functional and versatile impact resistant sound absorbing wall and ceiling lining system comprises of three component parts; the acoustic panel unit, the retaining channel and the removable cover strip.

The panel unit consists of a cassette tray formed from perforated metal containing the sound absorbent core. The core is of a special construction to provide improved impact resistance. The core is faced on both surfaces with a non-woven glass fabric to provide anti-dusting characteristics whilst remaining acoustically transparent. As standard all the metal components of the system are manufactured from galvanised mild steel.

The S-Series Acoustic Panel System is ideally suited to a wide range of industrial applications requiring sound absorbing linings. These include plant rooms, HVAC rooms, machine enclosures, data centres, general factory areas etc.



Parratech Environmental Control Pty Ltd

3 Kildo Crescent, Glendenning NSW 2761 | Tel: +61 2 9890 4425 | Fax: +61 2 9890 9743
Email: info@parratech.com.au | www.parratech.com.au



Key Benefits

These include plant rooms, HVAC rooms, machine enclosures, data centres, general factory areas etc.

- Efficient and effective sound absorbing material for noise reduction in commercial and industrial environments
- Highly durable providing long-term stability and performance
- Excellent acoustic performance
- Installation system is innovative, economical and straight forward
- Panels easily removable

Typical Applications

- Plant Rooms
- Control / IT Rooms
- HVAC Rooms
- Generator / Compressor Enclosures
- Power Stations
- Data Centres
- Factories/Warehouses
- Airports
- Outdoor sound control walls



**Good
Impact
Resistance**

**Maintenance
Free**

**Excellent
NRC Rating**

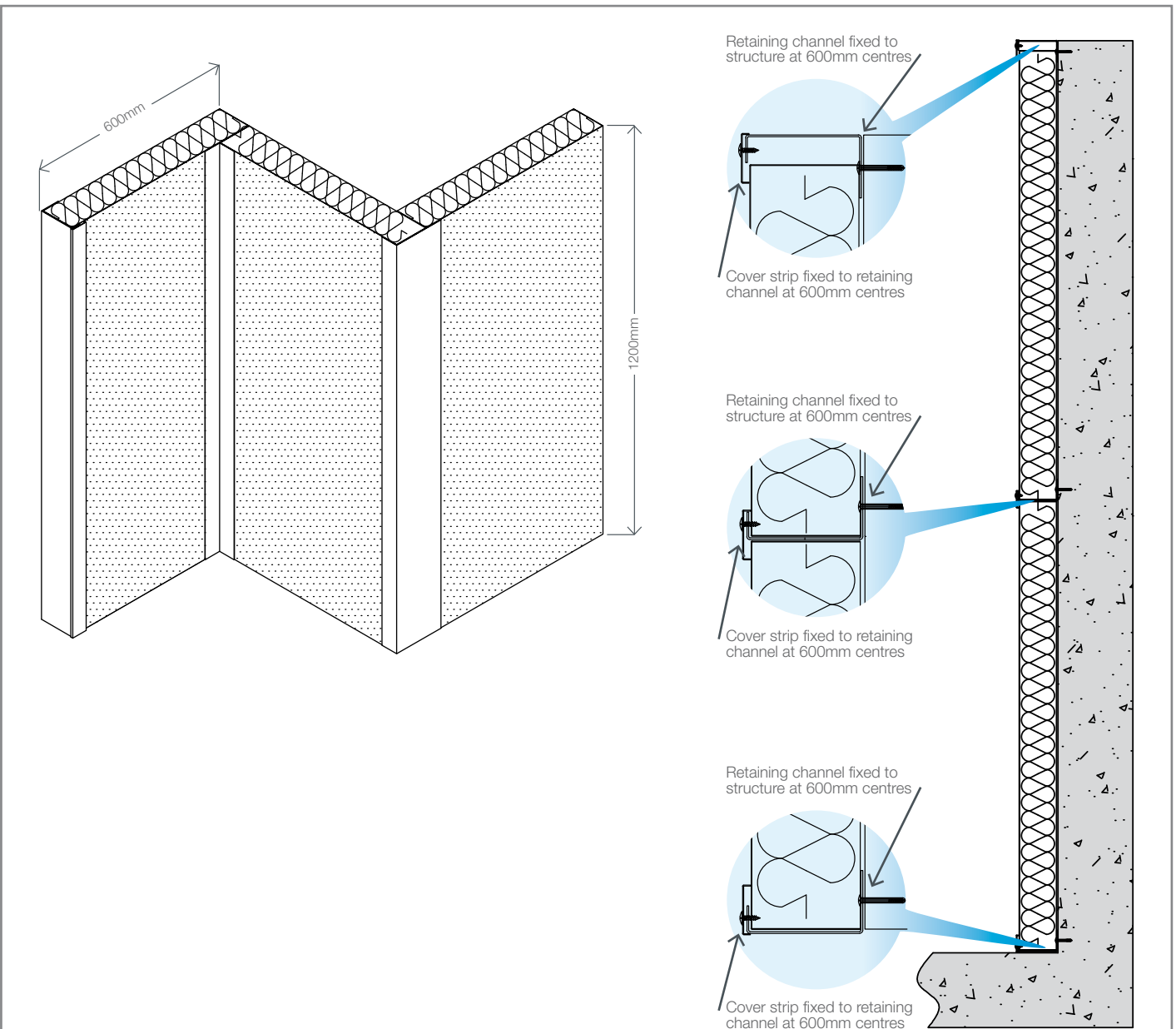
**Direct
Fix System**

**Highly
Durable**

**Easy to
Install**

Installation & Fixing Guide

Custom designed by a team of innovative tradesman and technical staff who understand the restrictions of building sites, the complications of installations where access can be limited, the importance of high quality finishes & above all the significance of the functionality of the system.



FIXING GUIDE

A. The main retaining channels are attached to the wall at 1205mm centres to form a series of horizontal trays. The top most channel is inverted and must be fitted to provide a 1180mm clear opening.

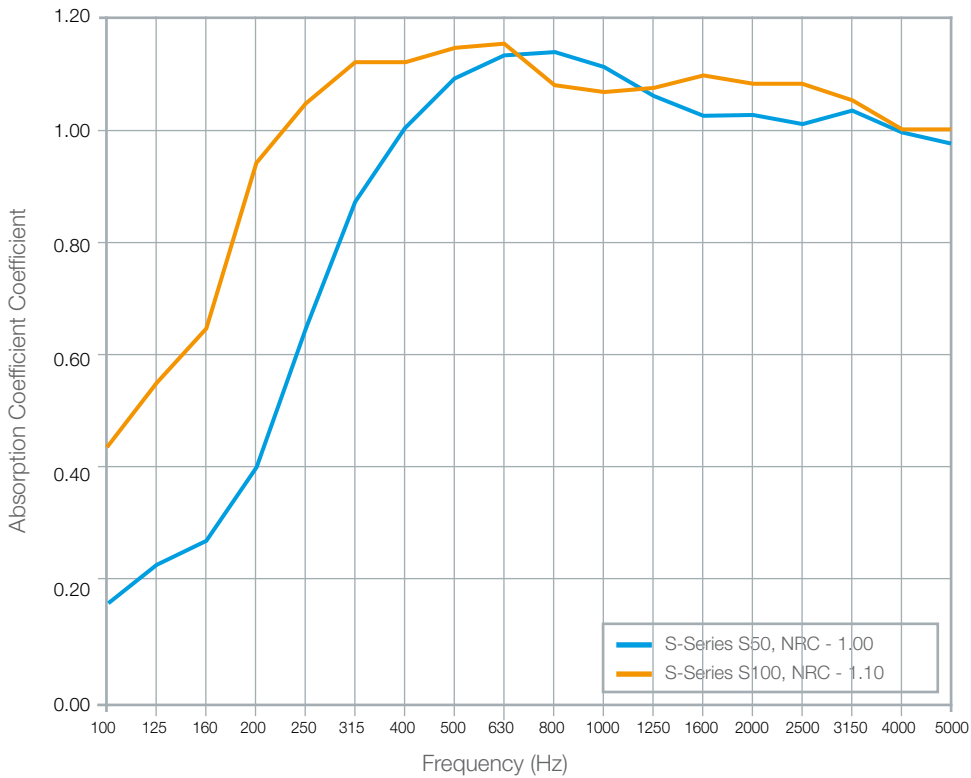
B. The S-Series panels are fitted vertically between the channels and are close butted together. The panels are locked into position by the action of fitting the cover strip.

C. The cover strips are attached to the retaining channels by means of self tapping screws or blind rivets (if subsequent easy removal of the panels is not anticipated).

D. No vertical supports are required other than the use of the retaining channel and cover strip at corners or finishing points.

Technical Details

Sound Absorption Coefficients When tested to AS ISO 354:2006



Format	Panels
Application	Wall & Ceiling
Main material	Panel; Rockfibre with perforated metal facing Retaining channel and cover strip; Galvanised mild steel
Face Material	Perforated galvanised mild steel with 25% open area
Fire Performance	BS 476, Part 7: Class 1
Noise Performance	S-Series S50; NRC - 1.00 S-Series S100; NRC - 1.10
Weight/Density	S-Series S50, 60kg/m ³ S-Series S100, 45kg/m ³
Dimensions	S-Series S50; 1200mm x 600mm x 50mm S-Series S100; 1200mm x 600mm x 100mm
Product Code	Parratech S-Series S50 (50mm) or Parratech S-Series S100 (100mm)
Colour/Finish	Natural galvanised finish



Parratech Environmental Control Pty Ltd
 3 Killo Crescent, Glendenning NSW 2761
 Tel: +61 2 9890 4425 | Fax: +61 2 9890 9743
 Email: info@parratech.com.au | www.parratech.com.au

